

DANGER Electrocutation Hazard

Disconnect all power sources before servicing or wiring. For continued protection against electric shock ensure the enclosure is properly grounded at the marked chassis ground terminal. Install all electrical equipment and wiring in accordance with national and local electric codes.

For indoor use in dry locations only (0-80% RH non-condensing.) Replace serviceable parts only with those recommended by Agrowtek Inc.

DANGER Risque d'électrocution

Débranchez toutes les sources d'alimentation avant l'entretien ou le câblage. Pour une protection continue contre les chocs électriques assurer l'enceinte est correctement reliée à la borne de terre du châssis marquée. Installez tous les équipements électriques et le câblage conformément aux codes électriques nationaux et locaux. Pour une utilisation en intérieur dans des endroits secs seulement (0-80% RH sans condensation.) Remplacer les pièces réparable seulement avec ceux recommandés par Agrowtek Inc.

The CX4A relay offers four bank-operated outlets to be connected to the Agrowtek GrowControl™ or other 24Vdc controls system for on/off control of plug operated equipment. When 24Vdc is supplied to the relay coil terminal the normally open load relay will close and supply power to a all receptacles at once.

OUTLET RATINGS: VOLTS: 240VAC CURRENT: 20A FREQUENCY: 60Hz
RELAY COIL POWER INPUT: VOLTS: 24VDC POWER: 3W FREQUENCY: -
INSTRUCTIONS:

Connection to Agrowtek Controller Terminals:

1. Ensure all power is disconnected; remove the front panel from the RX6 relay.
2. "Stop" the controller and disconnect the power from the controller's power supply.
3. Connect the positive 24Vdc relay coil terminal (+) on the CX1H input terminals to the desired output terminals on the controller.
4. Connect the DC ground terminal (-) on the CX4 relay to a DC ground terminal on one of the controller outputs blocks.
5. Connect the AC power input terminals L1 and L2 to a suitable branch-protected circuit.
6. Connect the Ground conductor to the terminal marked with the Earth ground symbol.
7. Install the AC load to the power output terminals according to applicable electrical codes.
8. Re-install the front panel and hand-tighten the screws.
9. Re-connect controller and relay panel power supply, place controller into RUN mode and test relay function by manually operating output from the controller interface.

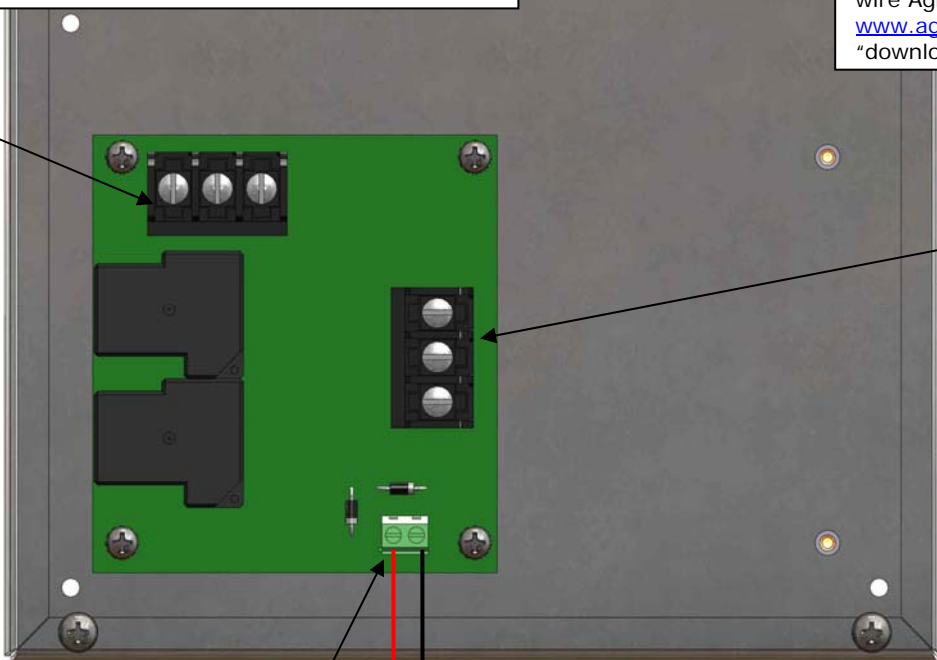
KEEP THESE INSTRUCTIONS

Wire Size Requirements

Relay Coil Terminals: Minimum 22 AWG Cu
 AC Power Input: Minimum 14 AWG Cu

Note: See "GC-Pro Hardware Installation Manual" for more examples on how to install and wire Agrowtek relays; available at www.agrowtek.com under "downloads" link.

AC Power
Input
Terminals



AC Power
Output
Terminals

24Vdc Relay Terminals

DC gnd
+24V