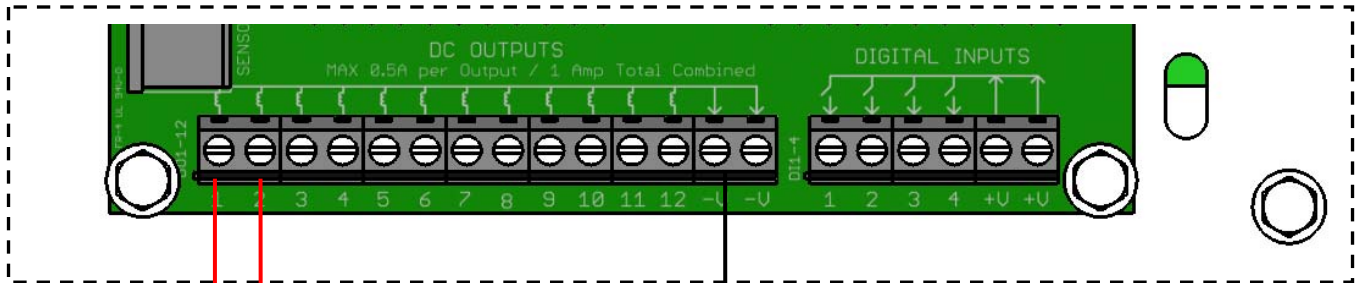


Wadsworth VC1000/2000 Wiring

⚠ WARNING

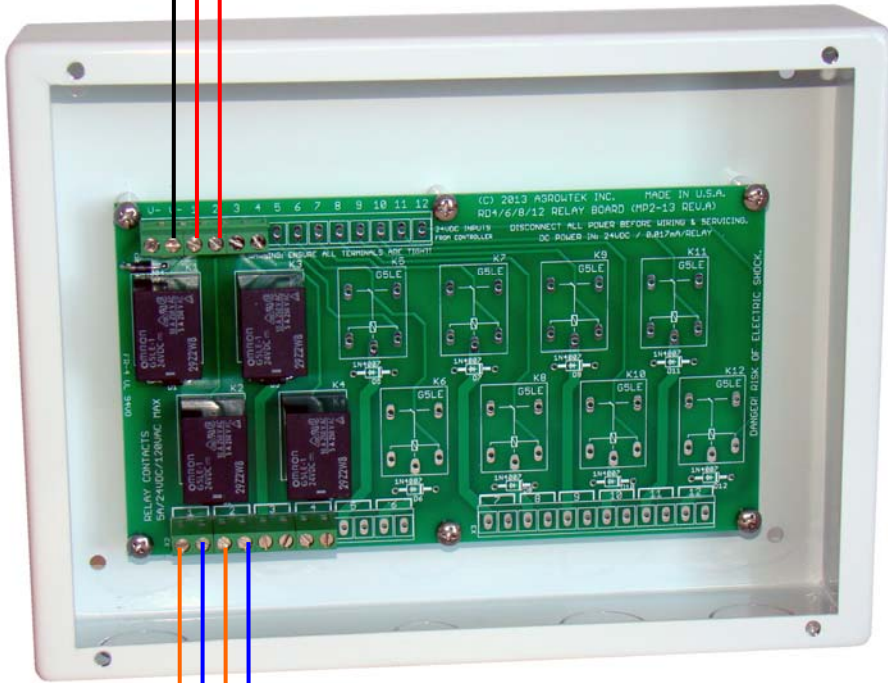
This system operates only on regulated 24vdc with 24vdc relays and components. Do not connect 24vac or any other AC power to the controller's inputs or outputs.

GC-Pro :: Typical Connection to VC1000/2000 Controller



Open Output# Close Output# V-

RD Series dry-contact relays



Terminal #1 (Close Signal on VC)

Terminal #3 (Open Signal on VC)

Terminal #4 (Common from VC)

