

ADJUSTABLE DEPTH | EASY MAINTENANCE | NO LEAKS

Two-part system for mounting SXL liquid level sensors from the top of a tank providing secure mounting, adjustable sensor heights, and easy installation and removal. Top mounting also avoids holes on the sides of the container to reduce chances of leaks.

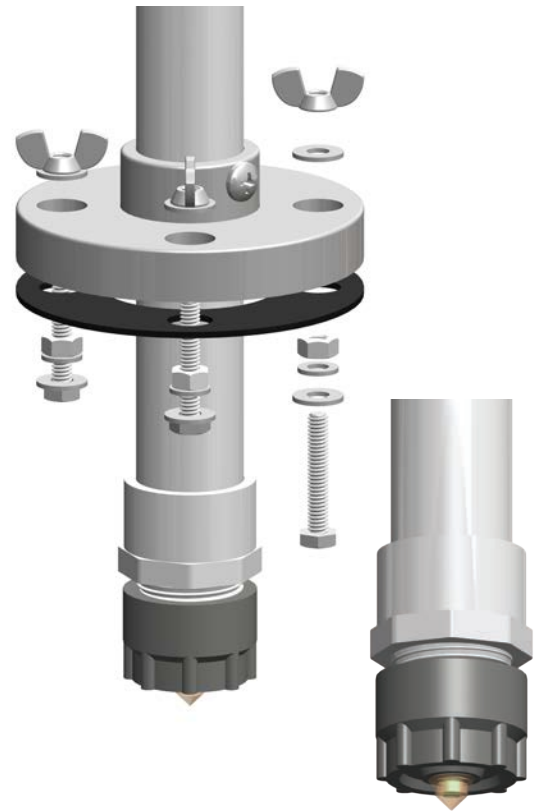
Part 1: Cap Kit

Mount SXL optical liquid level sensors on the end of a 1" PVC pipe. Kit includes a tapped PVC cap with o-ring seal and PVC pipe fitting. Provide 1" schedule 40 or 80 PVC pipe to length.

Part 2: Flange Kit

Securely mount sensor pipes to the tank. Kit includes hardware and custom flange with locking set screw for clamping the pipe at the desired location. All stainless hardware is designed for easy service without tools after installation.

Flange can be removed from the tank by quickly removing the wing nuts. Studs remain bolted to the tank while the sensor can be pulled up and removed for cleaning and maintenance.



Made in USA

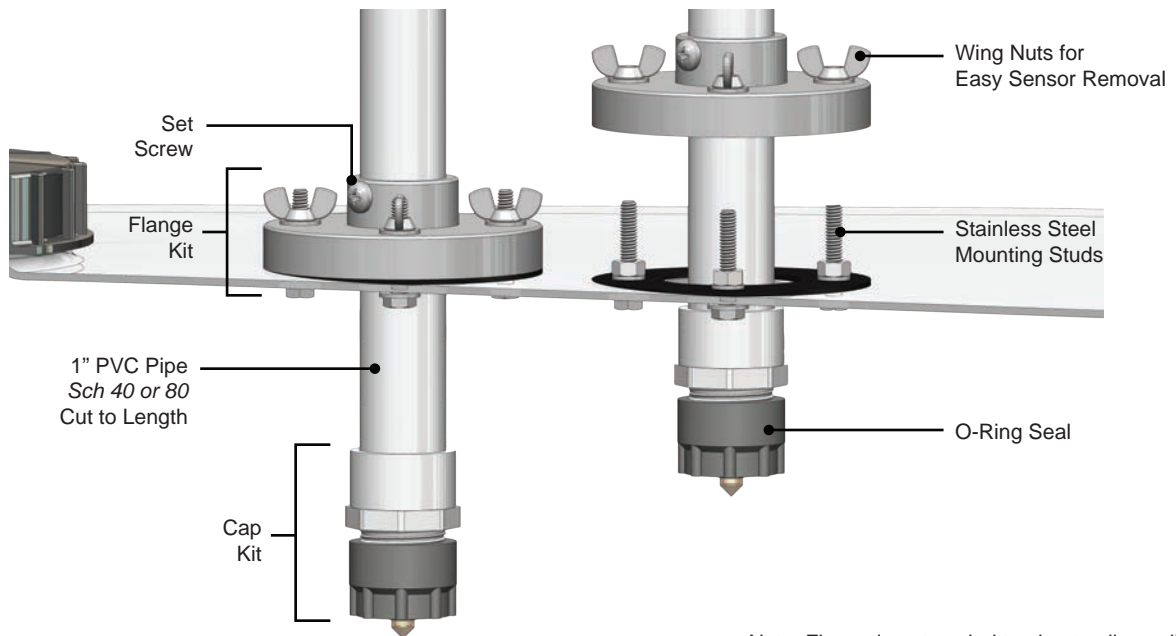


NSF Compliant Materials



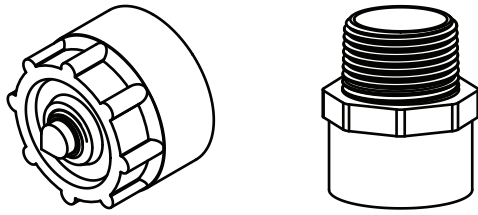
1-Year Warranty

Adjustable Sensor Mounting System



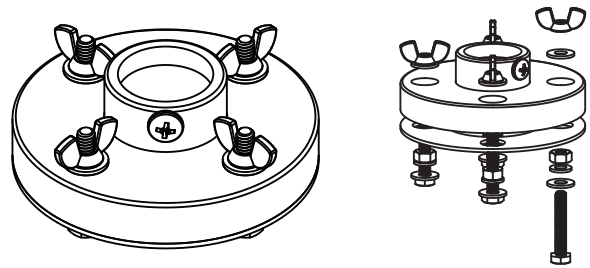
Note: Flange is not sealed to pipe to allow adjustment.

Cap Kit



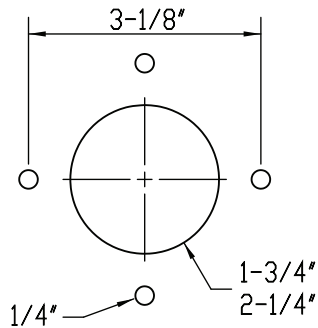
Cap kit includes threaded PVC sensor cap and PVC adapter for 1" PVC pipe. An o-ring in the sensor cap means no thread tape is required on the pipe fitting. To assemble: thread the SXL sensor into the cap and tighten with a 3/4" socket. Bond the connector to a length of 1" PVC pipe using PVC primer and cement. Make electrical connections and tighten the cap onto the fitting.

Flange Kit



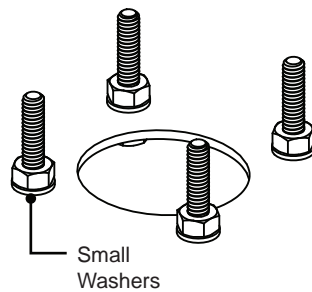
Flange kit includes one adjustable mounting flange with set screw, seal, and 4x stainless steel mounting bolt sets with wing nuts. Bolt studs install permanently into tank, and wing nuts secure the flange to the studs for easy removal. Set screw allows fast and easy adjustments to sensor depth. PVC flange with EPDM seal and all stainless steel hardware.

1. Drill Holes



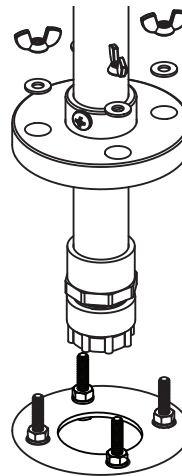
On the top of the tank, mark and drill the center hole using a hole saw, then align template or flange to mark and drill at least two bolt holes.

2. Install Bolts



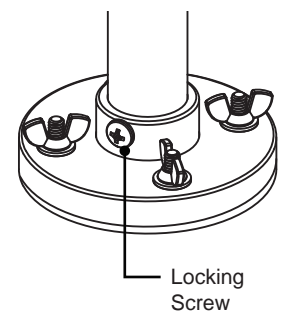
Install stainless steel bolt kit in tank. These bolts remain installed in the tank permanently. Locate the seal over the bolts.

3. Install Assembly



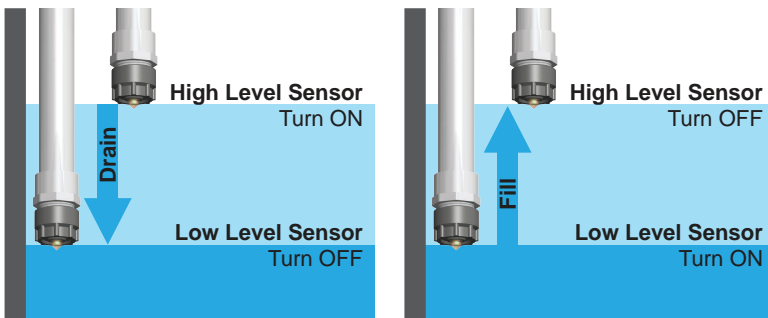
Insert sensor assembly into tank and secure wing nuts.

4. Adjust Height



Adjust the sensor height as required and secure the locking screw. The sensor may be extracted for maintenance by removing the wing nuts.

Automatic Fill / Drain Systems



Agrowtek's automatic fill or drain control systems use two SXL level sensors to control water level reliably and precisely between two points. Systems are available with a water valve or outlet relay kit and the LSM mounting kit for a complete solution.

