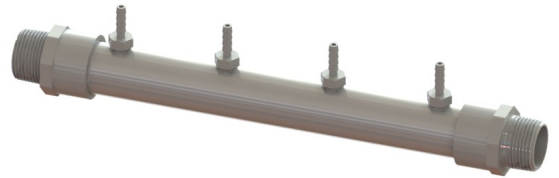


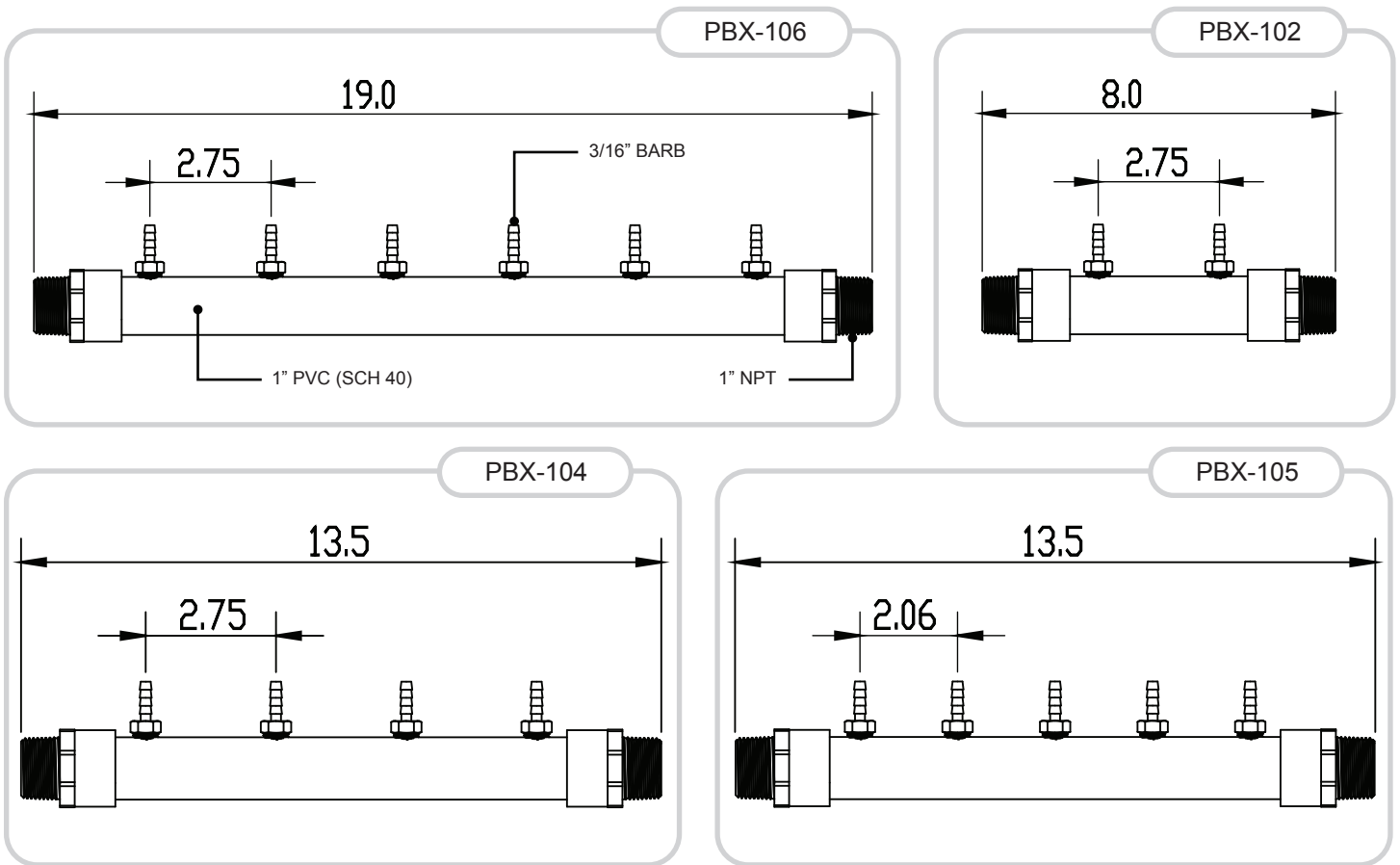
1" CHEMICAL INJECTION MANIFOLDS

PBX-104 is a simple multi-port manifold for connecting Agrow-Dose peristaltic dosing pumps into a recirculating sample loop for injecting chemicals such as nutrients or pH buffers.

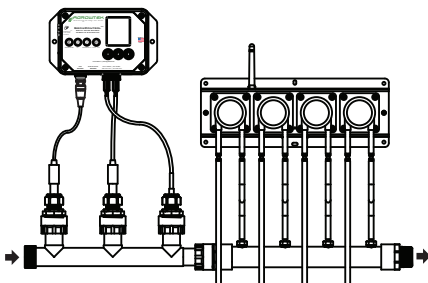
The PBX-100 series injection manifolds are often combined with a PBX-210, PBX-310, or PBX-410 sensor probe manifold for sampling of the solution prior to the injection point.



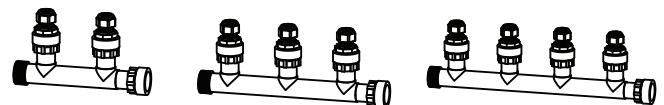
Specifications



Typical Installation



Optional Accessories



PBX-210 2-Port Sensor Manifold **PBX-310** 3-Port Sensor Manifold **PBX-410** 4-Port Sensor Manifold