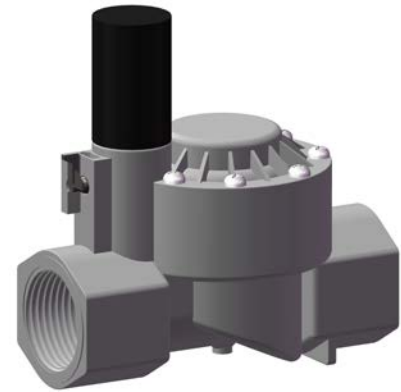


RUGGED | ECONOMICAL | SMART DESIGN

Electric solenoid actuated water valve for irrigation and fertigation equipment, liquid level controllers and more.

Intelligent design with self-cleaning ports for resistance to sediment, and fail-safe mechanism preventing failure in the open position. Zero stress diaphragm design to prevent stretching, a common failure mode. Molded shock-cone for anti-water hammer. Manual bleed/open lever. High strength glass-filled nylon body with stainless steel hardware.

Operates on 12Vdc for Agrowtek systems or 24Vac for standard irrigation applications.



- 

Max Pressure:
150 psi
- 

Stainless Steel
Solenoid Actuator
- 

Self-Cleaning Ports
Resistant to Sediment
- 

Made in
USA

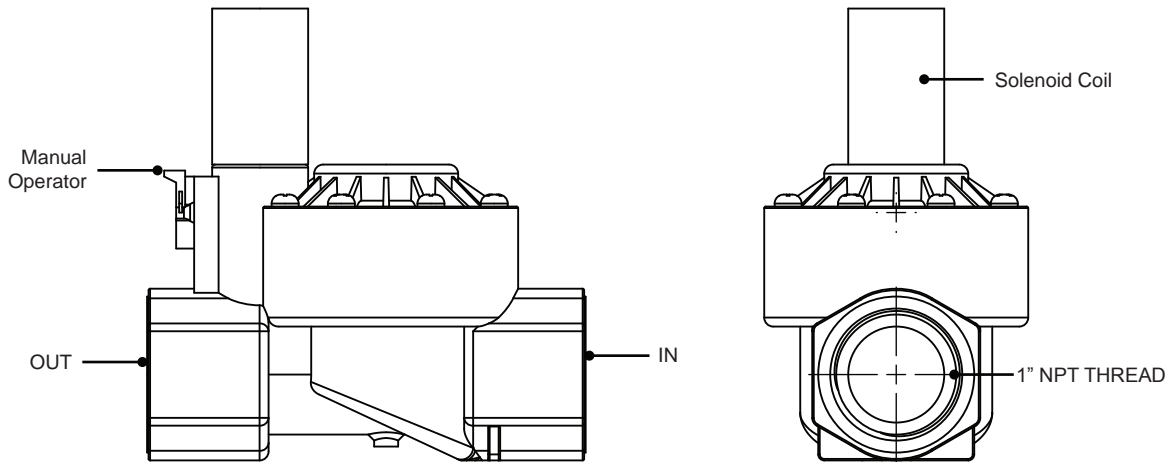
Applications

- Automatic Fill/Drain Level Control
- Water & Nutrient Tanks
- Recirculating Hydroponic Systems
- Aquarium/Aquaponics
- Irrigation Systems

Specifications

- Voltage Input: 12 Vdc / 24 Vac
- Current Consumption: 20 mA
- Connection Thread: 1" NPT Female
- Max Flow Rate: 0.25 - 35 gpm
- Max Pressure: 4 - 150 psi
- Reverse Flow: No Protection

Features



Ordering Information

VX1
└─ 1: 1" NPT

Includes 8" lead length for solenoid.

Note: Actual features appearance may vary.