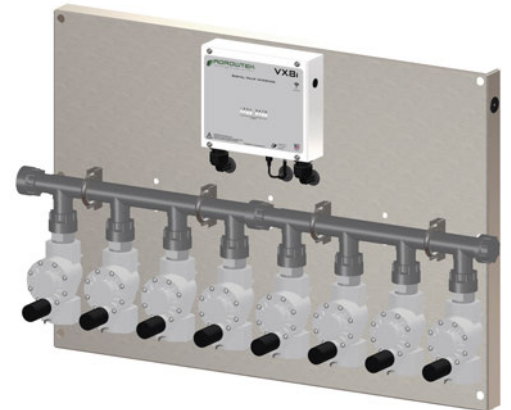


ZONE VALVES FOR FERTIGATION SYSTEMS

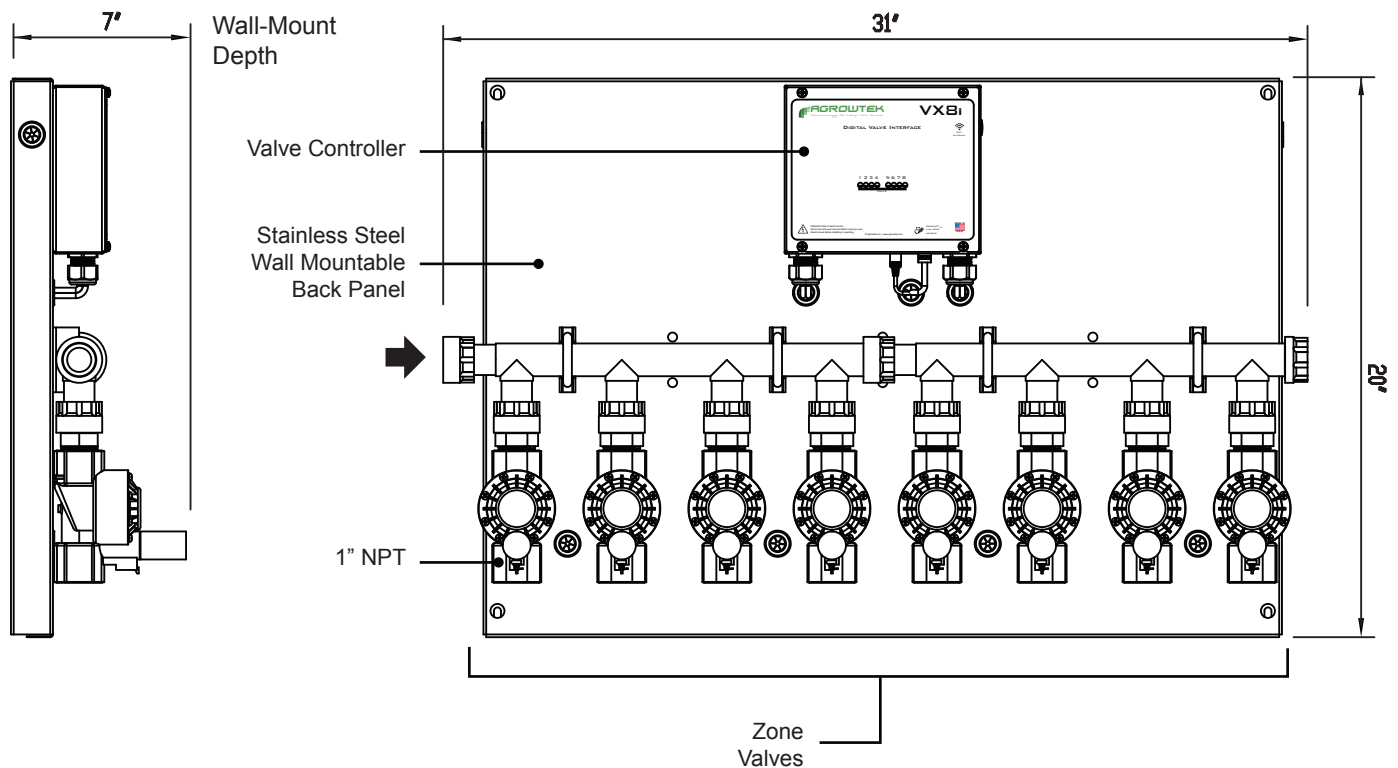
GrowControl™ VXP expansion panels features 8 zone valves, a 1" PVC manifold, and a valve controller mounted on a stainless steel back panel. Connects to BDX BatchMatic Dosing System to expand the number of zone valves on the system. Refer to the fertigation system specifications for expansion capabilities.

VX valves are made in the USA and feature a unique fail-closed design preventing flooding in the event of a valve failure.

VX8 digital valve controller features LED indicators displaying which valve is currently active. Includes 120V wall power supply. Simply connect GrowNET (RJ-45) cable to fertigator and connect manifold plumbing.



System Overview



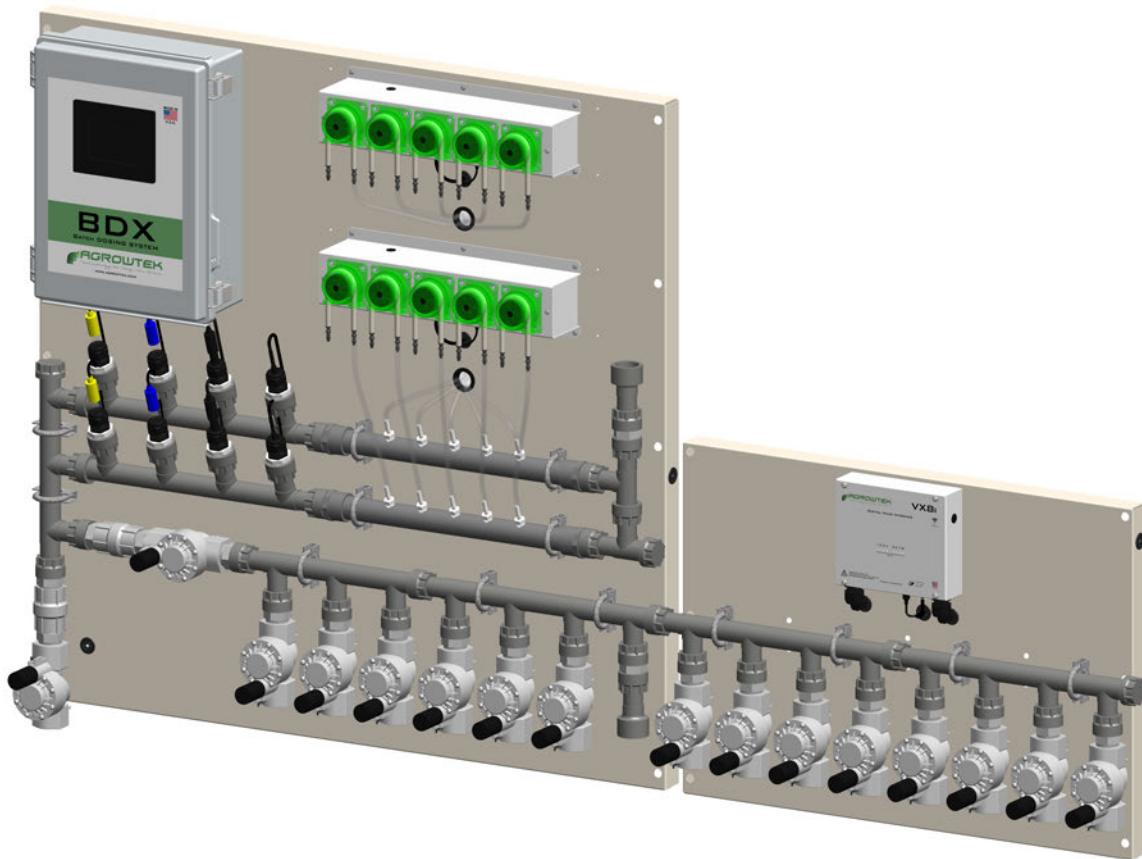
Specifications

- (8) Zone Valves
- Max 22 gpm, 150psi
- 1" Manifold & Valves with NPT Connections
- Stainless Steel Back Panel
- Made in USA

Ordering Options

VXP8
└── (8) Valve Panel

BatchMatic™ BDX Expansion Example



Expansion of a BatchMatic™ BDX fertigation system is as simple as mounting and connecting the manifolds, connecting the RJ-45 data cable, and plugging in the power supply. BDX systems can be expanded from 6 to 14 zones with the VXP8 expansion panel.